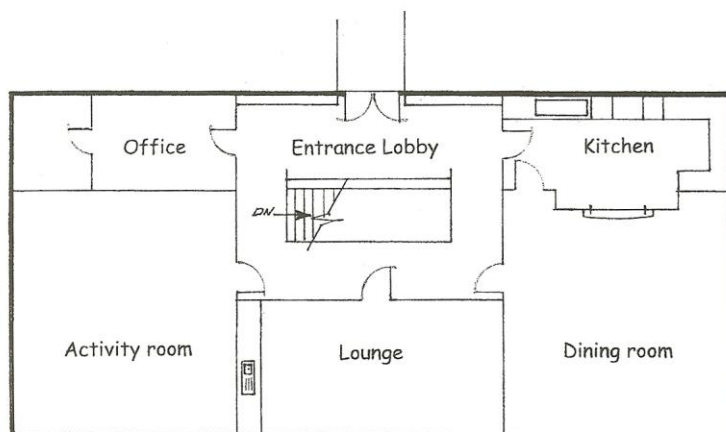


Reg. Charity No: 1051154

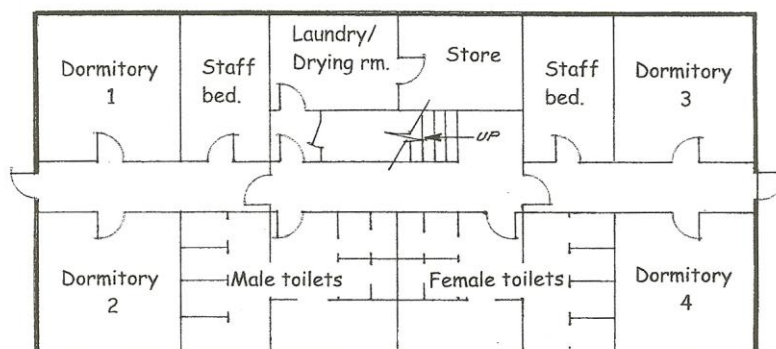
# The Friends of Moat Mount Campsite Moat Mount Outdoor Centre

Moat Mount Camp Site - Barnet Way - Mill Hill - London NW7 5AL  
Tel: 020 8906 9499 – fax: 020 8906 9952 - E-mail: moatmount@yahoo.co.uk  
Contact: Peter Smyth

## Outdoor Centre Layout



## Upper Floor



## Lower Floor

Stair lift.

Toilets include 4 WCs, 6 wash hand basins, 2 showers and electric hand dryers. There is a separate, fully equipped disabled person's washroom, WC and shower.

Dormitories with 4 bunk beds for 8 people, with storage unit.

Staff bedrooms 2 people with bedside units and wardrobes.

Fully equipped kitchen, including a high-speed dishwasher.

Spacious dining room/activity room equipped with 6, large foldaway tables and 36 chairs in both rooms.